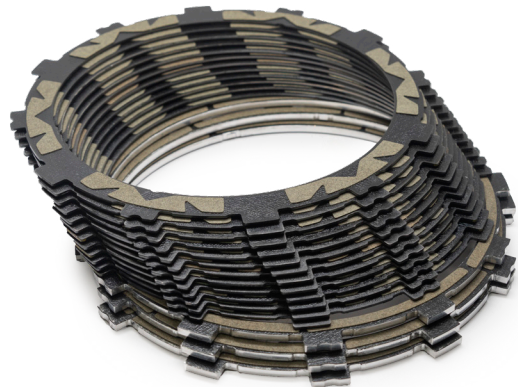
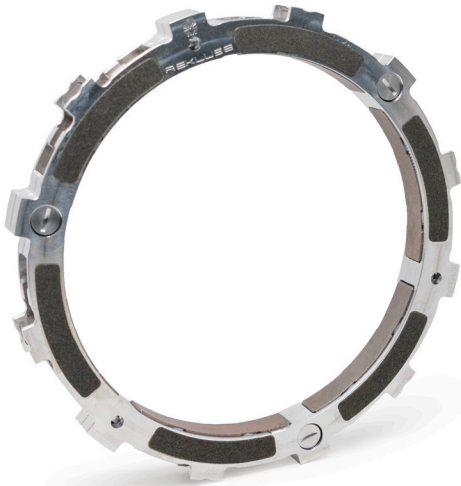




V-TWIN PRODUCT GUIDE 2019





Forged from personal inspiration and collective innovation, Rekluse changed the game. Our clutch technology has improved riding experiences for powersports enthusiasts worldwide. We believe in the philosophy that good enough is never good enough. Driven by purpose, progress and performance, we will inspire a better adventure.

We are renowned for our world class automatic clutches. Our unique technology enhances the riding experience by automatically engaging and disengaging the clutch based on engine speed, preventing a stall. Don't worry though, the clutch lever is still fully functional and can be used like stock to get an extra boost when the situation calls for it. By eliminating engine stalling and optimizing power delivery, we provide riders an enriched riding experience, increased clutch life, convenient navigation through stop-and-go traffic, and confident slow speed maneuverability.

In addition to auto clutches, we offer high quality manual clutches. Our manual clutches, which are unmatched in durability and versatility, add another element to maximize the performance of your ride without the need for stiffer springs or a lock-up device. Rekluse products are manufactured at our facility in Boise, ID.

**Driven by purpose, progress and performance,
we will inspire a better adventure.**

Rekluse products are engineered, developed
and manufactured in Boise, Idaho, USA.



Technology

All Rekluse clutch products are precision engineered and made of high quality materials to provide the best in performance and durability. Our components are stronger, longer lasting and built for maximum performance.



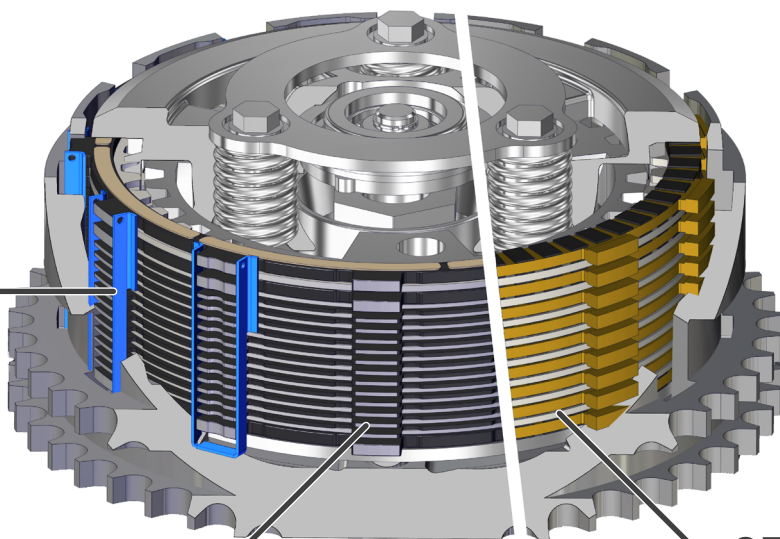
TorqDrive
Friction Disk

Rekluse Steel
Basket Sleeves



TorqDrive[®]

Our TorqDrive friction disk technology provides riders with added durability, a highly responsive feel and the torque capacity required to access the motor's full potential. TorqDrive disks feature a high strength steel core and friction material with unmatched energy capacity. TorqDrive delivers next level clutch control and consistency. Rekluse steel basket lining sleeves provide protection against basket wear and notching.



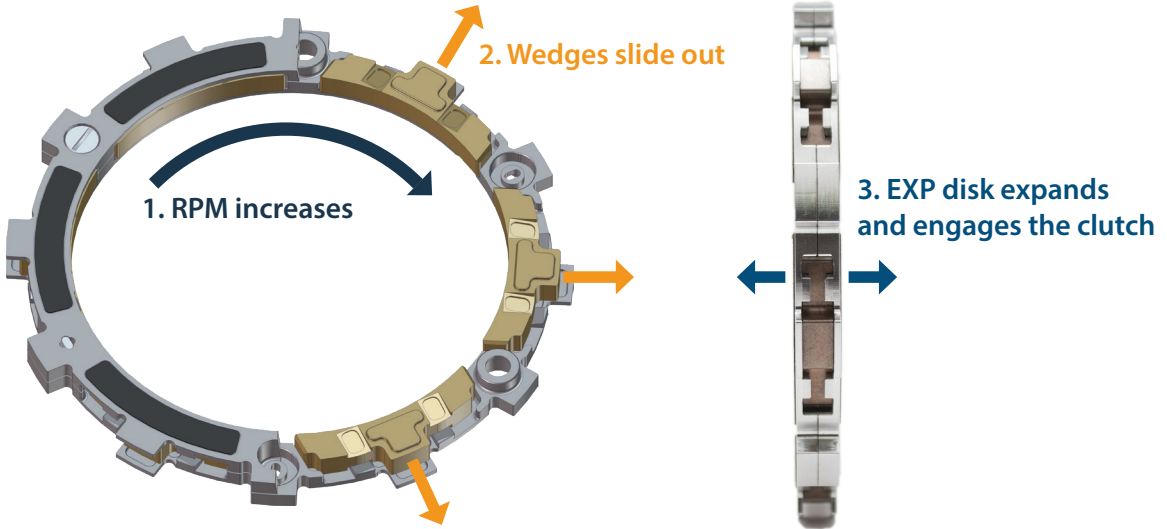
OEM

TorqDrive[®]

More Frictions = More Torque Capacity

EXP

Using principles of centrifugal force, EXP technology automatically engages and disengages the clutch based on engine RPM to eliminate stalling. With EXP, riders can start and stop without touching the clutch lever. By eliminating engine stalling and optimizing power delivery, we provide riders an enriched riding experience, increased clutch life, and convenient navigation through stop-and-go traffic, while maintaining a fully functional clutch lever at all times.



Core (Applicable to Harley-Davidson® Sportster® models only)

Our Core technology is the foundation of Core EXP 3.0. Engineered and made from aerospace quality billet aluminum, Core components optimize oil flow, last longer and reduce temperatures to maintain consistent performance even in extreme conditions. Components are designed for optimized spring locating to eliminate binding, providing smooth lever action.



Center Clutch



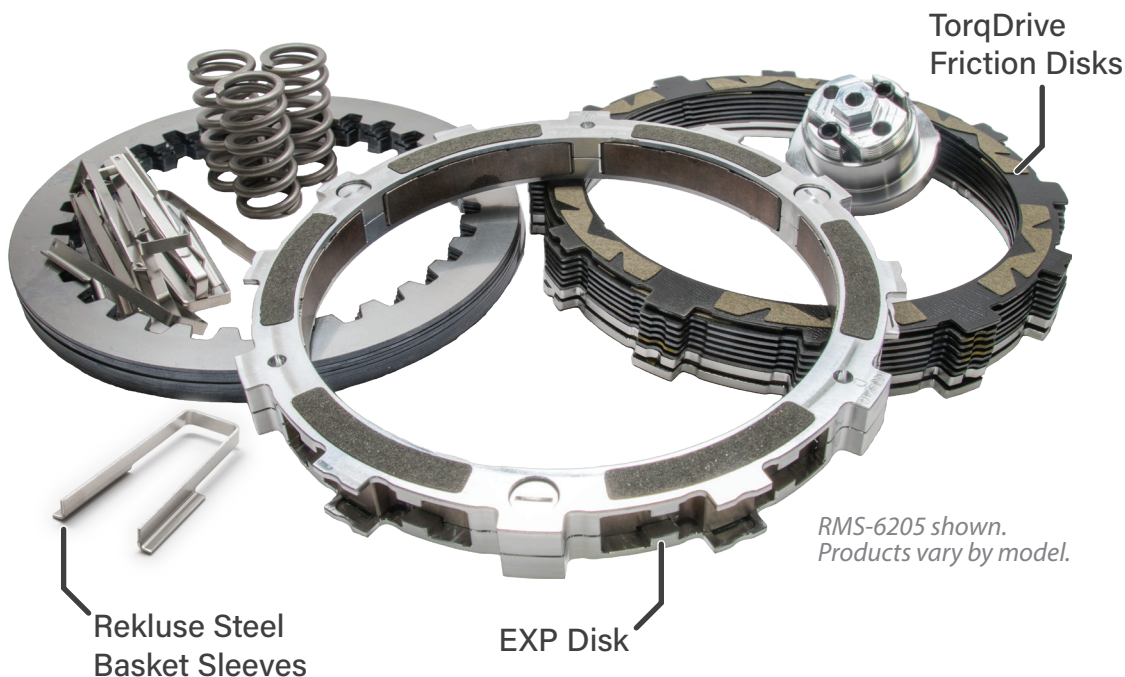
Pressure Plate

RADIUSTMX

RadiusX is a high-performance auto clutch combining TorqDrive® friction technology with our flagship automatic EXP disk, all within an OEM clutch footprint.

FEATURES AND BENEFITS

- Dead-on clutch engagement every time
- Take off and stop in gear without using clutch lever – no more stalls
- Confidently navigate traffic and slow speed conditions
- TorqDrive friction disks deliver higher torque capacity and increased power transfer
- Standard clutch lever function with full override capability
- Shifting transmission remains unchanged (clutch lever use is recommended for shifting)

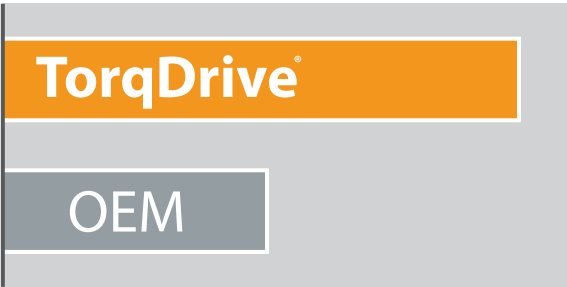




TorqDrive®

MORE FRICTIONS = MORE TORQUE CAPACITY

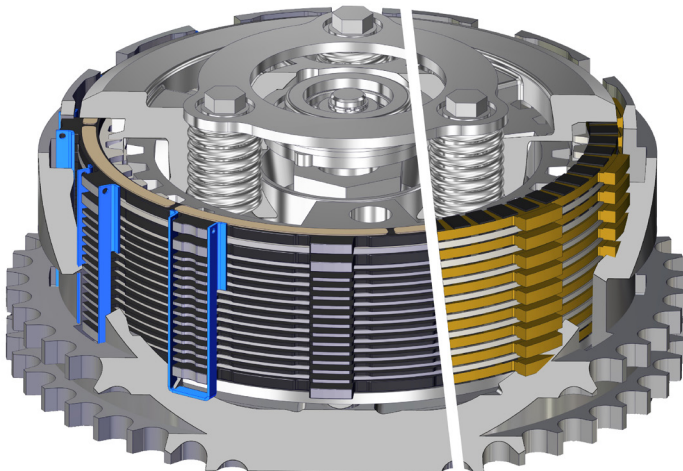
Up to 50% more torque capacity than OEM



(Data based on Harley-Davidson® Big Twin models. Torque capacity varies by specific model.)

FEATURES AND BENEFITS

- Plus 6 friction disks offers up to 50% stronger clutch engagement with no increase in lever effort
- Smoother shifting
- Improved lever feel
- Engineered to eliminate slip and tunable to handle high horsepower engines
- Steel core friction disks for improved heat dissipation and longer clutch life



TorqDrive vs OEM



JARED MEES
2018 AFT Twins Grand National Champion

CoreEXP 3.0

Available exclusively for Harley-Davidson® Sportster®

Core EXP 3.0 is a centrifugal auto clutch featuring Rekluse's EXP technology. Full clutch control and use of the lever is retained for a no-compromise riding experience. Core EXP 3.0 offers dead-on clutch engagement every time.

FEATURES AND BENEFITS

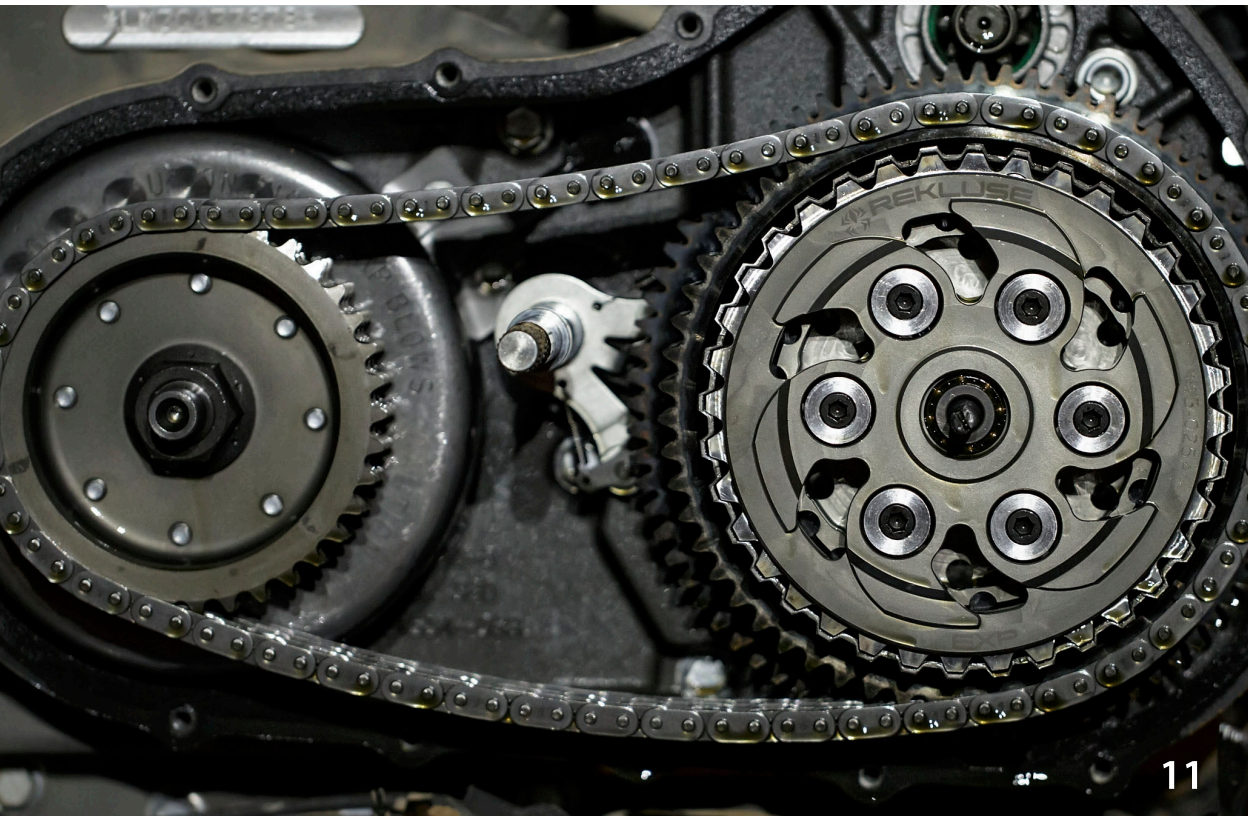
- Take off and stop in gear without using clutch lever – no more stalls
- Confidently navigate traffic and slow speed conditions
- Billet center hub and pressure plate converts clutch to 6 coil springs
 - Improves lever feel, clutch performance, and durability
- Increased oil flow through center hub and pressure plate
 - Decreases operating temperatures, increases clutch life
- Shifting transmission remains unchanged (clutch lever use is recommended for shifting)





Photos: El Solitario Desert Waves

DESERT WOLVES



Derby Covers

A Rekluse Derby Cover is the perfect complement to your RadiusX™, TorqDrive®, or Core EXP 3.0. Designed to match OEM specifications, covers bolt on with no modifications or drilling. Available in Gloss Black or Wrinkle Black, they will give you the look you want.

FEATURES AND BENEFITS

- Available in Gloss Black and Wrinkle Black
- Designed to OEM specifications – no modifications necessary
- Powder coated billet aluminum for increased durability
- Compatible with all Rekluse and OEM clutches

Wrinkle Black



Gloss Black



Models Covered

Rekluse products are available for the following applications:

- 1998+ Harley-Davidson® Twin Cam® models (Touring, Dyna®, Softail®, Trike)
- Excludes V-Rod®
- 2017+ Harley-Davidson® Milwaukee Eight® – M8 (Touring, Softail®, Trike)
- 1995+ Harley-Davidson® Sportster® models (Core EXP 3.0 only)
- 2014+ Harley-Davidson® Street® 500/750 models
- 2015+ Indian® Scout® models



Clutch Comparison Chart

AUTO

MANUAL

RADIUS^x CoreEXP[®]
(Sportster[®] only)

TorqDrive[®]

What it does	Provides automatic engagement	✓	✓	✗
	Prevents stalling	✓	✓	✗
	Reduces clutch fade	✓	✗	✓
What's included	Includes TorqDrive friction disks	✓	✗	✓
	Increased clutch disks over stock	✓	✗	✓
	Includes billet clutch hub & pressure plate	✗	✓	✗
	Uses OE friction disks	✗	✓	✗
Lever Feel	Maintains full clutch lever use	✓	✓	✓
	Maintains stock lever free play	✓	✓	✓

All Rekluse clutches require shifting, are tunable and have fully functional clutch levers. The Rekluse center clutch and pressure plate are hard anodized, billet components that work together to move more oil through the clutch, keeping it cooler. Models covered include select Harley-Davidson[®] and Indian[®] Scout[®]. Visit www.Rekluse.com for more info.

Where to Buy

Our partners are committed to supplying you with the latest innovations along with first-rate customer service. Visit our website to find your nearest dealer or distributor.

You can also purchase directly from us by visiting www.Rekluse.com or calling (208) 426-0659.

INTERNATIONAL
rekluse.com/distributors

HARLEY
rekluse.com/harley-dealers



WARNING:

This product contains chemicals known to the State of California to cause cancer and reproductive harm.
www.P65Warnings.ca.gov



Jared Mees

Jeffrey Carver Jr.

Photo: Scott Hunter / American Flat Track



www.rekluse.com (208) 426-0659

customerservice@rekluse.com

12000 West Franklin Road, Boise, ID 83709



@RekluseStreet



@RekluseStreet



RekluseMotorSports



Part # 841-027

Photo: Sara Liberte / Veterans Charity Ride